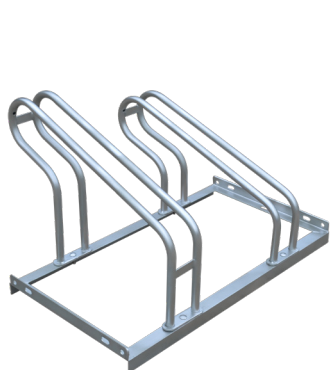
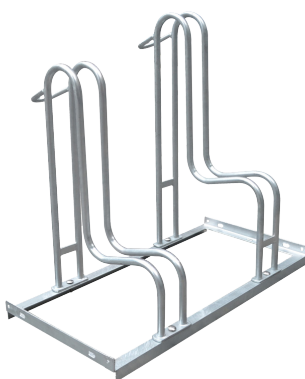




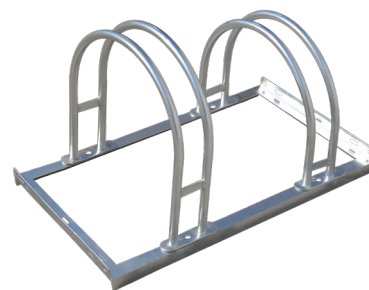
# HOOP PARKER BICYCLE RACKS



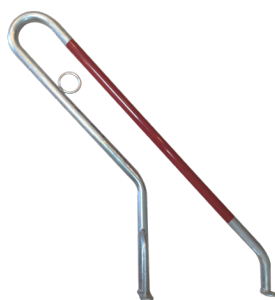
TYPE 2000



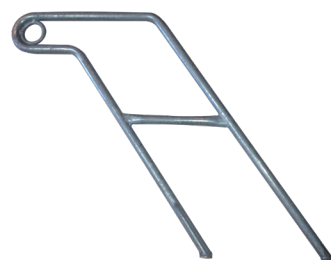
TYPE 4000



TYPE 5000



TYPE 450 LOCKABLE



TYPE 460 LOCKABLE



88 Yongchuan road,  
266071 Qingdao, CHINA



contact@sinoconcept.co.uk  
www.sinoconcept.co.uk

## Advantages +



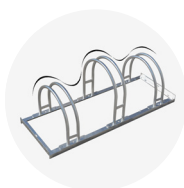
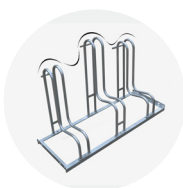
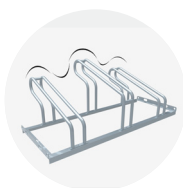
### **HOT DIPPED GALVANIZED FINISH (MINIMUM 80 MICRONS)**

A very corrosion-resistant treatment that will stop rust from being a problem.



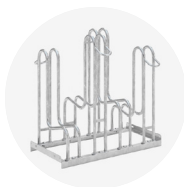
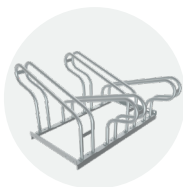
### **CUSTOM-MADE PACKING**

Makes the storage and the delivery to your clients easier.



### **SPACE-SAVING**

Low and high hoop combination enables space-saving bike parking.



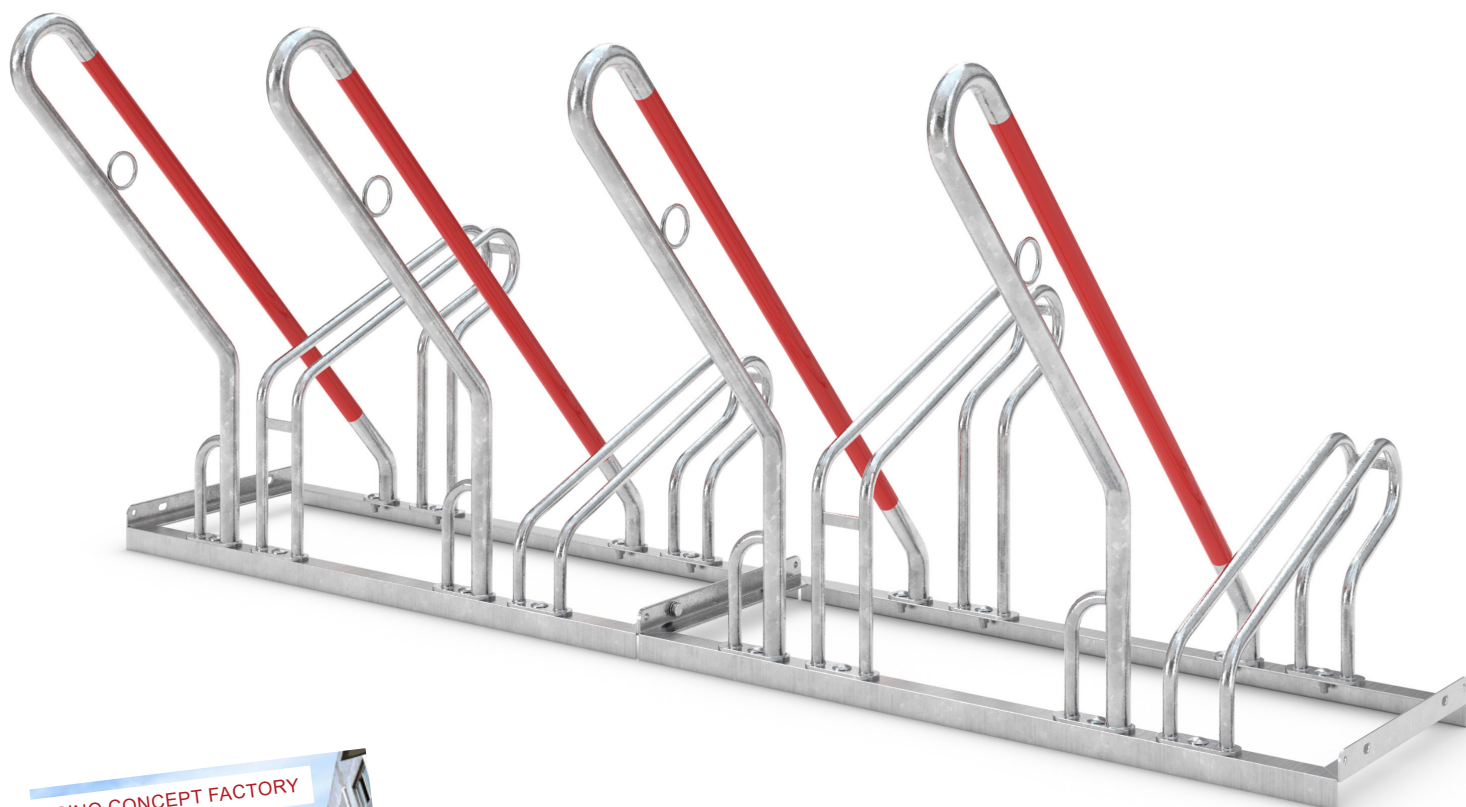
### **VERSATILE**

Can be used single or double sided.



### **LOCKABLE OPTIONS**

Bikes frames can be locked on both 450 & 460 types.



88 Yongchuan road,  
266071 Qingdao, CHINA



contact@sinoconcept.co.uk  
www.sinoconcept.co.uk

# Choose your bike rack

## 1. CHOOSE YOUR BASE



2 SPACES



3 SPACES



MULTIPLE BASES

## 2. CHOOSE YOUR HOOP



TYPE 2000

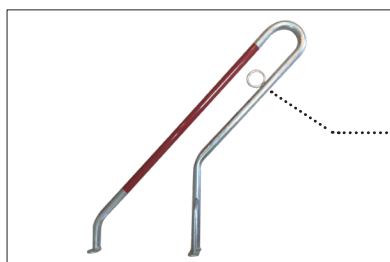


TYPE 4000

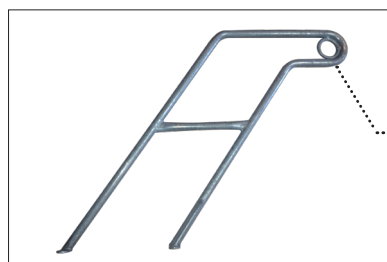


TYPE 5000

## 3. CHOOSE YOUR LOCKABLE OPTION



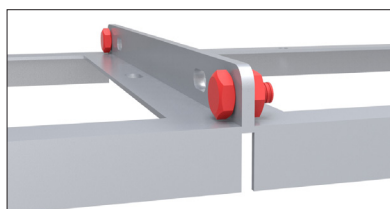
TYPE 450 LOCKABLE



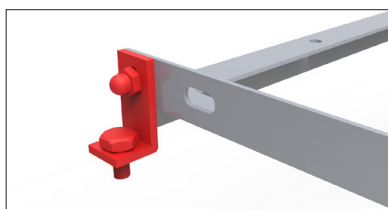
TYPE 460 LOCKABLE



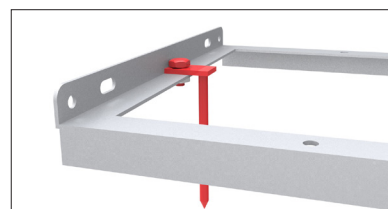
## 4. CONNECT AND INSTALL YOUR BASES



CONNECT TOGETHER

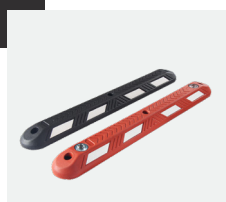


ANGLE FOR FLOOR FIXING



GROUND SPIKES

## YOU MAY ALSO BE INTERESTED IN



88 Yongchuan road,  
266071 Qingdao, CHINA



contact@sinoconcept.co.uk  
www.sinoconcept.co.uk