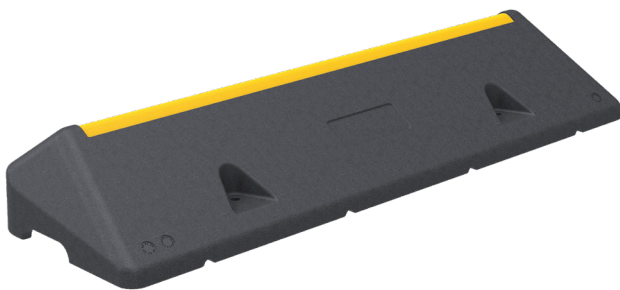


# HGV WHEEL STOP



CONTACT SURFACE



REAR SIDE



INTEGRATED HIGH-VISIBILITY  
MARKING



CONVENIENT HANDLES



EUROPEAN STANDARDS



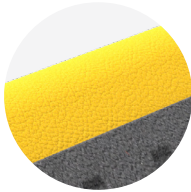
# Advantages +



**PLASTIC-RUBBER COMPOSITE**  
Cost effective, UV-resistant, and very sturdy.



**EFFICIENT IMPACT DISTRIBUTION**  
Full-surface contact for stability and even impact distribution for durability.



**INTEGRATED HIGH-VISIBILITY MARKING**  
Mould-in yellow marking for enhanced visibility and safety.





**CONVENIENT STORAGE**  
Screws and anchors stored underneath for easy setup.

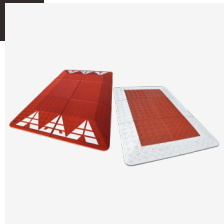


**CONVENIENT HANDLES**  
Designed for international shipping, easy storage and delivery.



PRODUCT	LENGTH	WIDTH	HEIGHT	MOUNTING HARDWARE
	1000 mm (39.4")	300 mm (11.8")	150 mm (5.9")	Coach screw: M12 x 160 mm (M12 x 6") Anchor: Ø 17 x 105 mm (Ø 0.67" x 4.1") 

## BEST SELLERS



6-3-102, 27 Pingxiang road,  
266011 Qingdao, CHINA



contact@sinoconcept.co.uk  
www.sinoconcept.co.uk