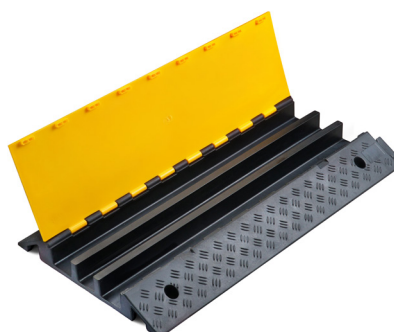




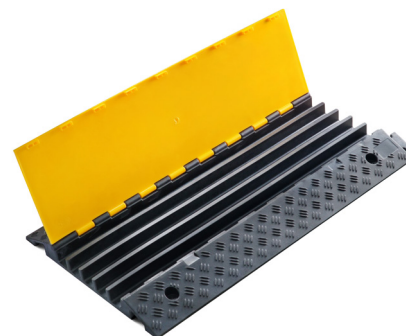
RUBBER CABLE RAMPS



2 CHANNELS



3 CHANNELS



5 CHANNELS



BUILT-IN HANDLE



REINFORCED STRUCTURE



REACH CERTIFIED

**IMPORTANT: OUR PRODUCTS ARE MADE OF PREMIUM RECYCLED RUBBER
WITHOUT ANY TOXIC SMELL.**

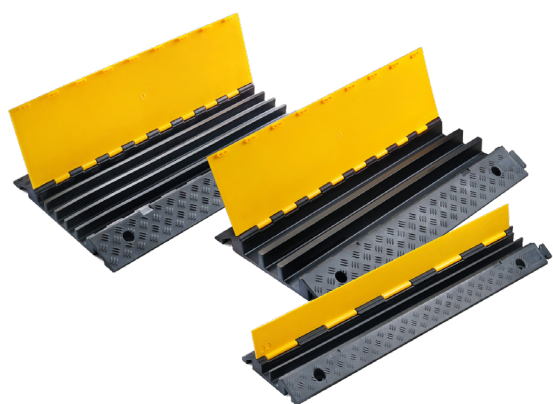


6-3-102, 27 Pingxiang road,
266011 Qingdao, CHINA



contact@sinoconcept.co.uk
www.sinoconcept.co.uk

Advantages +



BUILT-IN HANDLE

Easy to set-up and effortless to move around cable ramp. Particularly convenient for our heavy 3-channel type!



THICK YELLOW LID

Manufactured from UV-stabilized PE with an anti-slip surface to prevent tripping hazards.



REINFORCED STRUCTURE

Denser and sturdier material used to reinforce the maximum stress areas (hinges and connectors).



INTERLOCKING SYSTEM

Quick and flexible deployment with no risk of disconnection while in use.





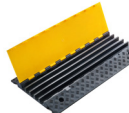
NYLON BAR

Manufactured from virgin nylon, it can withstand heavy vehicles rolling back and forth over the cable ramps.



45° CORNERS (2, 3 AND 5 CHANNELS)

Suitable for any type of jobs. Protect your cables even when obstacles are on the way.

PRODUCTS	TYPES	MAXIMUM CABLES DIAMETERS	OVERALL DIMENSIONS
	2 channels	30 mm (1.2")	Length: 990 mm (39") Width: 240 mm (9.5") Height: 45 mm (1.8")
	3 channels	50 mm (2")	Length: 900 mm (35.5") Width: 500 mm (20") Height: 70 mm (2.75")
	5 channels	32 mm (1.26")	Length: 900 mm (35.5") Width: 500 mm (20") Height: 50 mm (2")



- Drive slowly, maximum speed 5km/h.
- Suitable for motor vehicles and occasional heavy-load traffic, maximum loading of 9 tons per axle.
- Not suitable for constructions machines with non-conventional tires (too strong grip).
- Built-in holes to fix on the ground only for pedestrian use.



6-3-102, 27 Pingxiang road,
266011 Qingdao, CHINA



contact@sinoconcept.co.uk
www.sinoconcept.co.uk