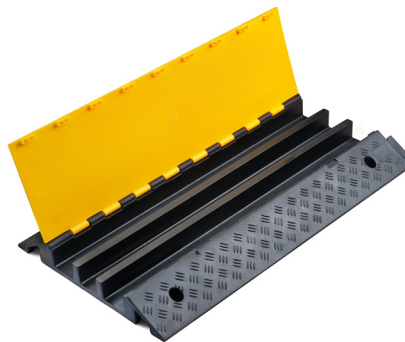




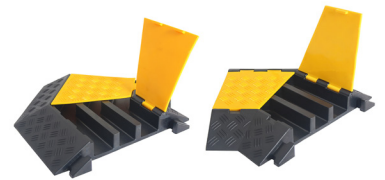
CABLE RAMP – 3 CHANNELS



STANDARD VERSION
(PLASTIC-RUBBER COMPOSITE)



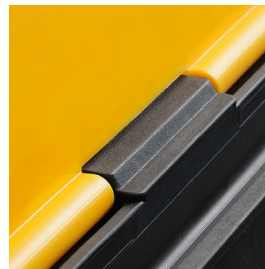
HEAVY-DUTY VERSION
(PREMIUM RECYCLED RUBBER)



45° LEFT TURN / RIGHT TURN
(PREMIUM RECYCLED RUBBER)



BUILT-IN HANDLE



HEAVY-DUTY HINGES



REACH CERTIFIED

STANDARD VERSION: DURABLE, BUDGET-FRIENDLY, AND PERFECT FOR MODERATE USE.

HEAVY-DUTY VERSION: ULTRA-RESISTANT, DESIGNED FOR TOUGH CONDITIONS AND LONG-TERM USE.

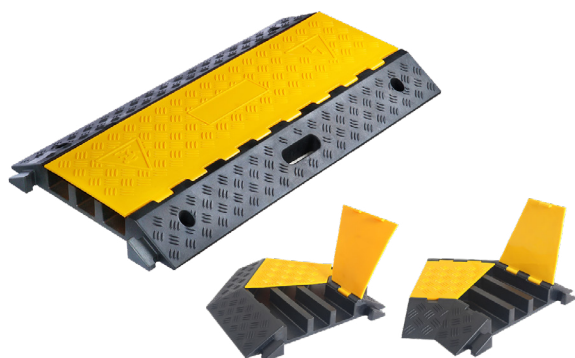


Headquarters: Hong Kong, China
Production & Operations Centre: Qingdao, China



contact@sinoconcept.com
www.sinoconcept.com

Advantages +



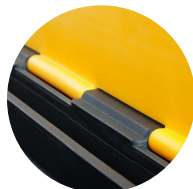
BUILT-IN HANDLE

Easy to transport and reduces fatigue, saving time during installation and storage.



THICK YELLOW LID

UV-stabilised PE with a non-slip surface to reduce tripping risks.



REINFORCED STRUCTURE

Premium material to reinforce key stress points like hinges and connectors.



INTERLOCKING SYSTEM

Easy to install and use, with no risk of disconnecting during operation.



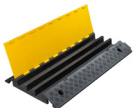
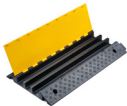
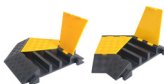
NYLON ROD

Integrated nylon rod securely connects the base and yellow cover, preventing detachment.



45° LEFT TURN / RIGHT TURN

Helps create right or left turns, keeping walking spaces safe.

PRODUCTS	TYPES	OVERALL DIMENSIONS (L*W*H)	CHANNEL DIMENSIONS (W*H)
	Standard version (Plastic-Rubber composite)	900 x 500 x 70 mm (35.5" x 20" x 2.75")	65 x 50 mm (2.56" x 1.97") x 2 56 x 50 mm (2.2" x 1.97")
	Heavy-duty version (Premium recycled rubber)	900 x 500 x 70 mm (35.5" x 20" x 2.75")	65 x 50 mm (2.56" x 1.97") x 2 56 x 50 mm (2.2" x 1.97")
	45° left turn / right turn (Premium recycled rubber)	Designed for 3-channel cable ramps	65 x 50 mm (2.56" x 1.97") x 2 56 x 50 mm (2.2" x 1.97")



- Drive slowly, maximum speed 5km/h.
- Suitable for motor vehicles and occasional heavy-load traffic.
- Not suitable for constructions machines with non-conventional tires (too strong grip).
- Built-in holes to fix on the ground only for pedestrian use.



Headquarters: Hong Kong, China
Production & Operations Centre: Qingdao, China



contact@sinoconcept.com
www.sinoconcept.com