



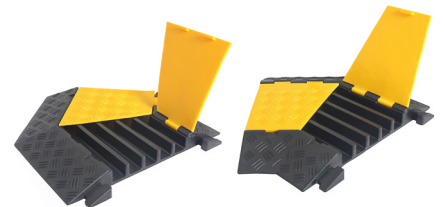
# CABLE RAMP – 5 CHANNELS



**STANDARD VERSION**  
(PLASTIC-RUBBER COMPOSITE)



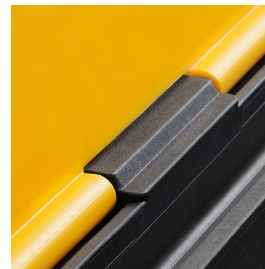
**HEAVY-DUTY VERSION**  
(PREMIUM RECYCLED RUBBER)



**45° LEFT TURN / RIGHT TURN**  
(PREMIUM RECYCLED RUBBER)



**BUILT-IN HANDLE**



**HEAVY-DUTY HINGES**



**REACH CERTIFIED**

**STANDARD VERSION:** DURABLE, BUDGET-FRIENDLY, AND PERFECT FOR MODERATE USE.

**HEAVY-DUTY VERSION:** ULTRA-RESISTANT, DESIGNED FOR TOUGH CONDITIONS AND LONG-TERM USE.



Headquarters: Hong Kong, China  
Production & Operations Centre: Qingdao, China



contact@sinoconcept.com  
www.sinoconcept.com

# Advantages +



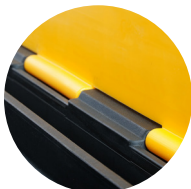
## BUILT-IN HANDLE

Easy to transport and reduces fatigue, saving time during installation and storage.



## THICK YELLOW LID

UV-stabilised PE with a non-slip surface to reduce tripping risks.



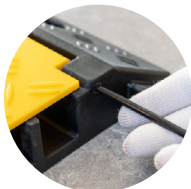
## REINFORCED STRUCTURE

Premium material to reinforce key stress points like hinges and connectors.



## INTERLOCKING SYSTEM

Easy to install and use, with no risk of disconnecting during operation.



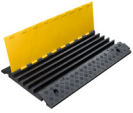
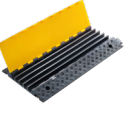
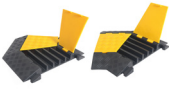
## NYLON ROD

Integrated nylon rod securely connects the base and yellow cover, preventing detachment.



## 45° LEFT TURN / RIGHT TURN

Helps create right or left turns, keeping walking spaces safe.

PRODUCTS	TYPES	OVERALL DIMENSIONS (L*W*H)	CHANNEL DIMENSIONS (W*H)
	Standard version (Plastic-Rubber composite)	900 x 500 x 50 mm (35.5" x 20" x 2")	38 x 32 mm (1.5" x 1.26")
	Heavy-duty version (Premium recycled rubber)	900 x 500 x 50 mm (35.5" x 20" x 2")	38 x 32 mm (1.5" x 1.26")
	45° left turn / right turn (Premium recycled rubber)	Designed for 5-channel cable ramps	38 x 32 mm (1.5" x 1.26")



- Drive slowly, maximum speed 5km/h.
- Suitable for motor vehicles and occasional heavy-load traffic.
- Not suitable for constructions machines with non-conventional tires (too strong grip).
- Built-in holes to fix on the ground only for pedestrian use.



Headquarters: Hong Kong, China  
Production & Operations Centre: Qingdao, China



contact@sinoconcept.com  
www.sinoconcept.com