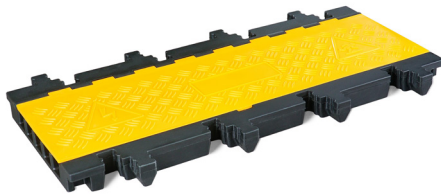
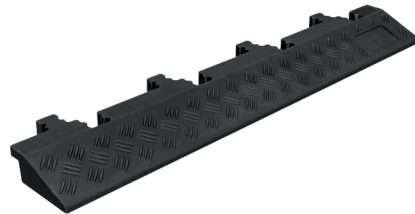


MODULAR CABLE RAMPS



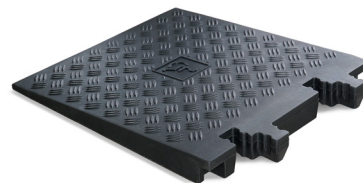
MIDDLE SECTION



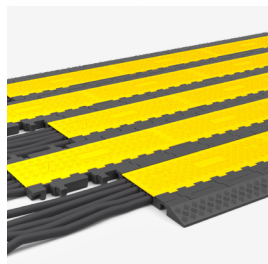
STANDARD RAMP



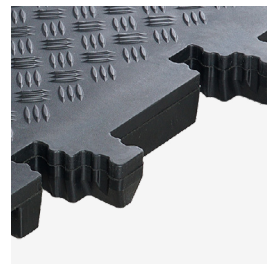
GENTLE SLOPE RAMP



HALF GENTLE SLOPE RAMP



PEDESTRIAN SAFETY



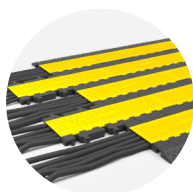
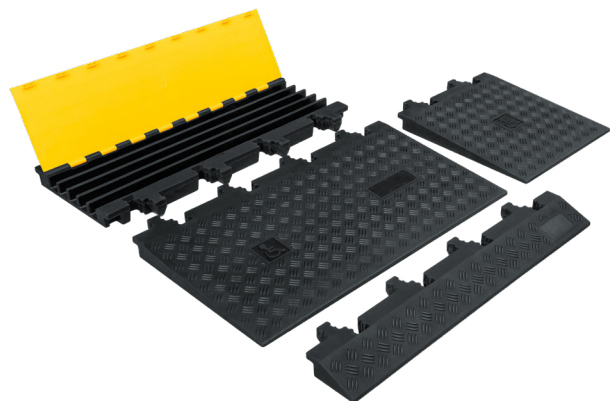
INTERLOCKING SYSTEM



REACH CERTIFIED



Advantages +



PEDESTRIAN SAFETY

Flat, wide design helps people cross safely without tripping.



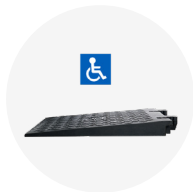
MODULAR DESIGN

You can easily join the sections together to make the ramp any width or length you need.



BUILT-IN HANDLE

Easy to transport and reduces fatigue, saving time during installation and storage.







WHEELCHAIR FRIENDLY

Gentle slope ramps make crossing smooth and comfortable for wheelchair users.

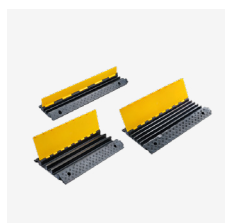


COMPATIBLE WITH 5-CHANNEL CABLE RAMP

H connector lets you join modular cable ramps with a 5-channel cable ramp for bigger, flexible setups.

PRODUCTS	TYPES	OVERALL DIMENSIONS (L*W*H)	CHANNEL DIMENSIONS (W*H)
	Middle Section	900 x 370 x 50 mm (35" x 15" x 2")	38 x 32 mm (1.50" x 1.26")
	Standard Ramp	900 x 140 x 50 mm (35" x 5.5" x 2")	
	Gentle Slope Ramp	900 x 500 x 50 mm (35" x 20" x 2")	X
	Half Gentle Slope Ramp	450 x 500 x 50 mm (18" x 20" x 2")	

BEST SELLERS



6-3-102, 27 Pingxiang road,
266011 Qingdao, CHINA



contact@sinoconcept.co.uk
www.sinoconcept.co.uk