



# PLASTIC-RUBBER COMPOSITE WHEEL STOP



550 MM (2')



900 MM (3')



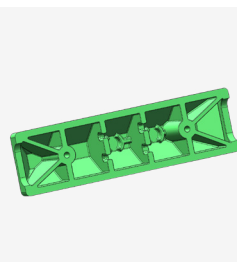
1220 MM (4')



1830 MM (6')



CONVENIENT STORAGE



HEAVY-DUTY STRUCTURE



REACH CERTIFIED



Headquarters: Hong Kong, China  
Production & Operations Centre: Qingdao, China



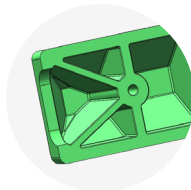
contact@sinoconcept.com  
www.sinoconcept.com

# Advantages +



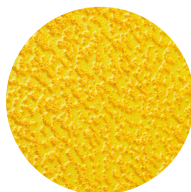
## PLASTIC-RUBBER COMPOSITE

Cost effective, UV-resistant, and very sturdy.



## HEAVY-DUTY STRUCTURE

Thick walls and V-shaped ribs for maximum strength in tough conditions.



## REFLECTIVE FILMS

Embedded thermoplastic reflective road marking films to enhance visibility and safety.



## CONVENIENT STORAGE

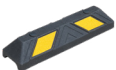
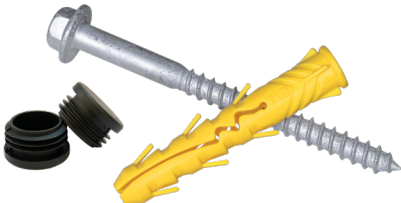



Screws, anchors, and caps stored underneath for easy setup.



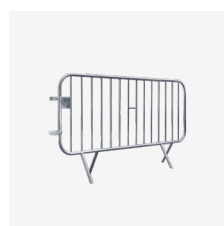
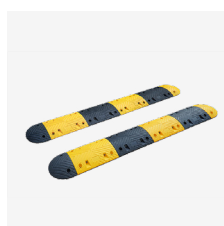
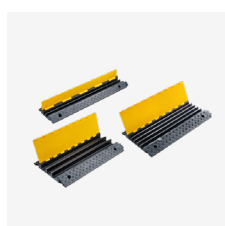
## CUSTOM-MADE PACKING

Designed for international shipping, easy storage and delivery.



PRODUCTS	TYPES	OVERALL DIMENSIONS (L*W*H)	MOUNTING HARDWARE
	550 mm (2')	550 x 150 x 100 mm (2' x 6" x 4")	 <p>Coach screw: M12 x 160 mm (M12 x 6") Anchor: Ø 17 x 105 mm (Ø 0.67" x 4.1") Cap: Ø 33.5 mm (Ø 1.32")</p>
	900 mm (3')	900x 150 x 100 mm (3' x 6" x 4")	
	1220 mm (4')	1220 x 150 x 100 mm (4' x 6" x 4")	
	1830 mm (6')	1830 x 150 x 100 mm (6' x 6" x 4")	

## BEST SELLERS



Headquarters: Hong Kong, China  
Production & Operations Centre: Qingdao, China



contact@sinoconcept.com  
www.sinoconcept.com